

ISLAND BREEZE BEDROOM

Your Colours, Your Style, Make It Your Own



Prices & Measurements

Pages 1 - 18

Island Breeze Build Guide

Pages 19 - 26



Made In The UK



Choice Of Colours



Bespoke Sizing

OUR PAINT COLOURS

The Amberley collection colours are a broad palette of modern neutral tones designed to compliment your colour scheme.

We would always recommend that you do the same. Choosing Painted Furniture is about adding something to your home which is personal to you, something with soul!



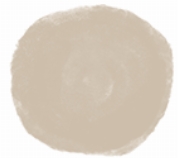
Lily White



Wessex White



Stone



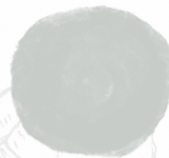
Truffle



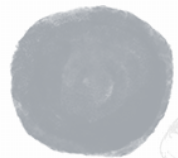
Cloud



Sea Mist



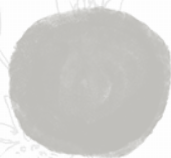
Little Boy Blue



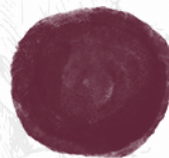
Moondust Grey



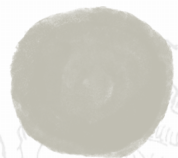
Coastal Mist



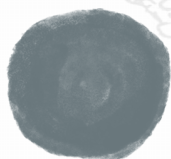
Cotton



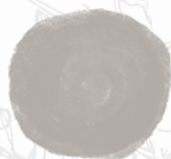
Corinium Red



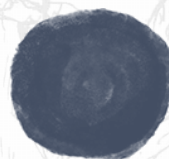
Rockford



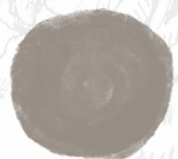
Denim



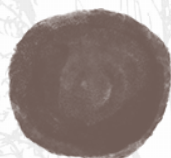
Dove



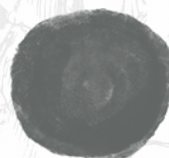
Inkwell



Potter's Clay



Leveret



Night Sky

PAINTED FURNITURE COMPANY

CIRENCESTER

High Foot End Bed

Shown in picture with optional under bed drawers £635



| | | | |
|------------------------|--------------------------|---------------|--------|
| 3ft Bed Frame | W1050 x H1190 x D2090 mm | £1,035 | NEBB21 |
| 4ft Bed Frame | W1370 x H1190 x D2090 mm | £1,140 | NEBB24 |
| 4ft 6 Bed Frame | W1520 x H1190 x D2090 mm | £1,185 | NEBB27 |
| 5ft Bed Frame | W1670 x H1190 x D2190 mm | £1,265 | NEBB30 |
| 6ft Bed Frame | W1980 x H1190 x D2190 mm | £1,330 | NEBB33 |

Low Foot End Bed

Shown in picture with optional under bed drawers



| | | | |
|------------------------|--------------------------|---------------|--------|
| 3ft Bed Frame | W1050 x H1190 x D2090 mm | £865 | NEBB20 |
| 4ft Bed Frame | W1370 x H1190 x D2090 mm | £970 | NEBB23 |
| 4ft 6 Bed Frame | W1520 x H1190 x D2090 mm | £1,035 | NEBB26 |
| 5ft Bed Frame | W1670 x H1190 x D2190 mm | £1,120 | NEBB29 |
| 6ft Bed Frame | W1980 x H1190 x D2190 mm | £1,185 | NEBB32 |

Headboard Only

| | | | |
|------------------------|--------------------------|-------------|--------|
| 3ft Bed Frame | W1050 x H1190 x D2090 mm | £420 | NEBB22 |
| 4ft Bed Frame | W1370 x H1190 x D2090 mm | £465 | NEBB25 |
| 4ft 6 Bed Frame | W1520 x H1190 x D2090 mm | £495 | NEBB28 |
| 5ft Bed Frame | W1670 x H1190 x D2190 mm | £550 | NEBB31 |
| 6ft Bed Frame | W1980 x H1190 x D2190 mm | £570 | NEBB34 |

ISLAND BREEZE BEDSIDE CHESTS & CHEST OF DRAWERS



Made In The UK



Choice Of Colours



Bespoke Sizing

PAINTED FURNITURE COMPANY
CIRENCESTER

Island Breeze Bedside Chests



1 Drawer Open Shelf Bedside

Medium **£400** W500 x H640 x D370 mm NEBS63

Large **£445** W580 x H640 x D470 mm NEBS70



2 Drawer Bedside

Small **£380** W400 x H640 x D370 mm NEBS66

Medium **£420** W500 x H640 x D370 mm NEBS64

Large **£465** W580 x H640 x D470 mm NEBS69



1 Door Bedside

Medium **£400** W500 x H640 x D370 mm NEBS60



Island Breeze Bedside Chests



1 Door Open Shelf Bedside

Medium **£420** W500 x H816 x D370 mm NEBS61



1 Door 1 Drawer Bedside

Medium **£445** W500 x H816 x D370 mm NEBS62



2 Drawer Open Shelf Bedside

Small **£400** W400 x H816 x D370 mm NEBS67

Medium **£445** W500 x H816 x D370 mm NEBS65

Large **£485** W580 x H816 x D470 mm NEBS71



3 Drawer Bedside

Medium **£445** W500 x H816 x D370 mm NEBS68

Large **£530** W580 x H816 x D470 mm NEBS72

Island Breeze Chest Of Drawers



3 Drawer Chests

Small **£930**

W1060 x H970 x D470 mm NEBC94

Large **£970**

W1060 x H970 x D470 mm NEBC83



2 Over 2 Chests

Small **£930**

W810 x H910 x D470 mm NEBC81

Large **£970**

W1060 x H970 x D470 mm NEBC80



2 Over 3 Chests

Small **£950**

W810 x H1170 x D470 mm NEBC91

Large **£1,015**

W1060 x H1240 x D470 mm NEBC82



Narrow Tallboys

4 Drawers **£610**

W500 x H1090 x D370 mm NEBC93

5 Drawers **£675**

W500 x H1300 x D370 mm NEBC85



Wide Tallboys

4 Drawers **£970**

W700 x H1090 x D470 mm NEBC86

5 Drawers **£1,055**

W700 x H1300 x D470 mm NEBC87



3 Over 4 Chests

Small **£1,290**

W1120 x H910 x D470 mm NEBC92

Large **£1,330**

W1500 x H970 x D470 mm NEBC84



Gents Chest

£1,585

W1060 x H1300 x D470 mm NEBC90

Please note that the Gents Chest is now only available in the 'knock down' version.

This will be built in 2 parts, the drawer section and the hanging section, which then sit in a shared top and plinth.

"Versatile, Practical and Beautiful.
The Island Breeze Gents chest offers
the perfect compact storage solution"



ISLAND BREEZE WARDROBES



Extra Hanging Rail **£65** IBWEHR

Fitted Or Adjustable Shelves **£65** IBWESH

Centre Divide **£115** IBWCD

Tie Rack **£65** IBWTR

Join Two Wardrobes In a Shared Plinth & Top **£100** IBWSHP



Made In The UK



Choice Of Colours



Bespoke Sizing

PAINTED FURNITURE COMPANY
CIRENCESTER

One Door Narrow Wardrobe



W590 mm x D590 mm

Full Hanging

Height 1860 mm **£695** NEBW405

Height 2160 mm **£805** NEBW407

With 1 Drawer

Height 1860 mm **£780** NEBW409

Height 2160 mm **£885** NEBW411

One Door Wide Wardrobe



W740 mm x D590 mm

Full Hanging

With 1 Drawer

Height 1860 mm **£780** NEBW406

Height 1860 mm **£865** NEBW410

Height 2160 mm **£885** NEBW408

Height 2160 mm **£995** NEBW412

Two Door Narrow Wardrobe



W960 mm x D590 mm

Full Hanging

Height 1410 mm **£970** NEBW401

Height 1860 mm **£1,055** NEBW400

Height 2160 mm **£1,225** NEBW402

With 1 Drawer

-

Height 1860 mm **£1,265** NEBW403

Height 2160 mm **£1,455** NEBW404

Two Door Wide Wardrobe



W1260 mm x D590 mm

Full Hanging

Height 1410 mm **£1,120** NEBW414

Height 1860 mm **£1,185** NEBW413

Height 2160 mm **£1,330** NEBW415

With 1 Drawer

-

Height 1860 mm **£1,330** NEBW416

Height 2160 mm **£1,565** NEBW417

Three Door Wardrobe



W1490 mm x D590 mm

Full Hanging

Height 1410 mm **£1,775** NEBW420

Height 1860 mm **£1,880** NEBW419

Height 2160 mm **£2,135** NEBW421

With 2 Drawers

Height 1860 mm **£2,220** NEBW422

Height 2160 mm **£2,515** NEBW423



W1940 mm x D590 mm

Full Hanging

Height 1410 mm **£1,920** NEBW425

Height 1860 mm **£2,030** NEBW424

Height 2160 mm **£2,300** NEBW426

With 3 Drawers

Height 1860 mm **£2,300** NEBW427

Height 2160 mm **£2,620** NEBW428

Three Door Wardrobes combines a two door and a one door wardrobe into a single base and plinth to give the appearance of a single complete unit. These pieces can easily be separated for access or moving.

Four Door Wardrobe



W1860 mm x D590 mm Deep

Full Hanging

Height 1410 mm **£2,070** NEBW439

Height 1860 mm **£2,175** NEBW429

Height 2160 mm **£2,490** NEBW430

With 2 Drawers

Height 1860 mm **£2,620** NEBW431

Height 2160 mm **£2,980** NEBW432



W2460 mm x D590 mm

Full Hanging

-

Height 1860 mm **£2,450** NEBW433

Height 2160 mm **£2,810** NEBW434

With 4 Drawers

Height 1860 mm **£2,765** NEBW435

Height 2160 mm **£3,170** NEBW436

Four Door Wardrobes combines two, two door wardrobes into a single base and plinth to give the appearance of a single complete unit. These pieces can easily be separated for access or moving.

Material size restrictions (Solid Top) mean we cannot offer the 2460mm wide wardrobe at 1410mm high

ISLAND BREEZE BLANKET BOXES & DRESSING TABLES



Made In The UK



Choice Of Colours



Bespoke Sizing

PAINTED FURNITURE COMPANY
CIRENCESTER

Island Breeze Blanket Boxes



Blanket Chests with Drawers

Small **£635**

W960 x H460 x D470 mm
NEBL55



Large **£695**

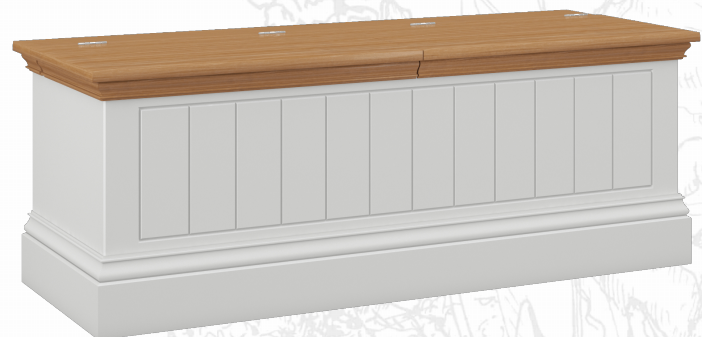
W1260 x H460 x D470 mm
NEBL56



Blanket Boxes with Lift Up Lid

Small **£610**

W960 x H460 x D500 mm
NEBL57



Large **£675**

W1260 x H460 x D500 mm
NEBL58

Island Breeze Dressing Tables



Stool £255

W370 x H480 x D370 mm NEBD37

Small Swing Mirror £170

W400 x H450 x D200mm NEBM12

Large Swing Mirror £210

W700 x H450 x D200mm NEBM13



Single Dressing Table £910

W1000 x H816 x D470 mm NEBD35



Double Dressing Table £1,185

W1300 x H816 x D470 mm NEBD36

Island Breeze Mirrors



Wall Mirrors

Small Mirror £300

W900 x H600 x D30mm NEBM15

Medium Mirror £390

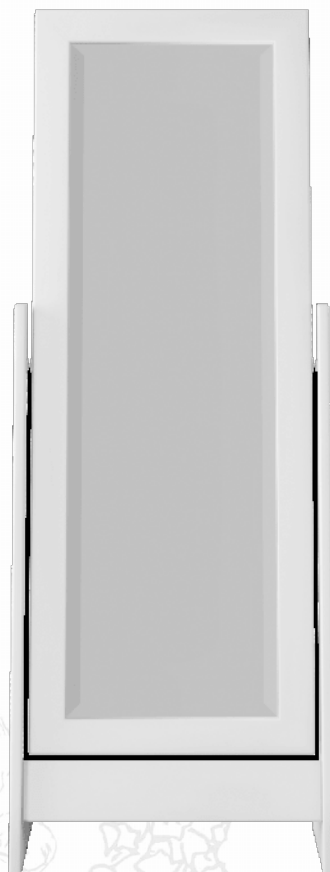
W1200 x H600 x D30mm NEBM16

Large Mirror £505

W1500 x H600 x D30mm NEBM17

Extra Large Mirror £685

W1900 x H600 x D30mm NEBM18



Standing Mirror £495

W550 x H1500 x D400mm
NEBM14



DISCOVER THE DIFFERENCE

HOW WE BUILD YOUR FURNITURE

A Focus On The Oxford and Island Breeze Collections



Our Beautiful Oxford and Island Breeze furniture collections are both made at a small independent factory in the South West of England, just a few miles from Bath. We don't mass produce this furniture or hold stock piles of finished product, quite the opposite in fact, each piece is made individually to your order, in your chosen colour, in your specified finish and even in your own bespoke size if required.

IT ALL STARTS WITH A GOOD DESIGN



Our Beautiful Oxford and Island Breeze furniture collections are both made at a small independent factory in the South West of England, just a few miles from Bath. We don't mass produce this furniture or hold stock piles of finished product, quite the opposite in fact, each piece is made individually to your order, in your chosen colour, in your specified finish and even in your own bespoke size if required.

MEASURE TWICE, CUT ONCE.



Although the factory invests continually in modern machinery there is plenty of traditional skill on show. Pencils, Rulers and tape measures are never far away. Arguably one of the most important and time consuming parts of the build process is the initial cutting of the materials needed to build your cabinets. We take a lot of time and care in this part of the process because it needs to be right first time, a misplaced cut at this stage can spell disaster later on! A Careful eye is applied at each stage as the sections of your cabinet are cut, detailed and made ready for assembly.



EVERYBODY LOVES A DOVETAIL JOINT

Details And Construction



With the strength and quality of modern epoxy glues it isn't strictly necessary to use traditional Tongue and groove, mortise and tenon or dovetail jointing, but when hand building a piece of quality furniture it somehow just feels right to use these tried and tested traditional techniques. So we do!

Its just a shame we always paint over them!

Drawer boxes are always an important part of any piece of furniture, so we like to make sure ours are built properly. All the drawer boxes in the Island Breeze or Oxford furniture collections are built with 20mm thick front side and back sections, the front is dovetail jointed for a correct boxed finish and the rear is glued and doweled. The bottom of the drawers are made using a full 10mm thick board, so no saggy bottoms with these drawers. They are all assembled by hand and tested for strength.



THE BEST FINISH REQUIRES THE BEST MATERIALS



Making sure the final finish of your piece of furniture has the perfect smooth look that we are renowned for starts way before the paint shop. The engineered timber we use to build the carcass of the Island Breeze and Oxford Furniture is the best available.

Whilst we use grade one American Oak for the beautiful Oak tops of your furniture, and trust us, they really are lovely, the main carcass of the Island Breeze and Oxford Furniture is built using a high density engineered timber. This engineered timber is made using a combination of hardwood and epoxy resin which is formed under intense pressure to create a very dense, stable material which is the perfect base for building painted furniture. Why do we use an Engineered Timber rather than a solid wood construction? Simple really, the Island Breeze and Oxford collections are our premium collections and it's the best material for the job.



Our engineered timbers have superior stability when compared to hardwood sections and are resistant to expansion or contraction with changing levels in temperature or humidity. Wood inevitably moves slightly as the temperature or humidity in your home changes, usually from season to season. That's ok for a non painted product but if that happened with our painted furniture the paint would obviously crack and ruin the appearance of your furniture. The only drawback is that with a density of around 900kg/m³ the engineered timbers mean that our furniture is very heavy, but that's not such a bad thing. We also select engineered timbers which are designed for optimal uniformity which, along with the fact they are entirely free of knots, helps us to create the perfectly smooth finish you expect.

OTHER SELECT MATERIALS

All of the legs on the Island Breeze and Oxford furniture, whether turned or straight on dining tables, coffee tables and dressing tables are built using 'unsorted grade' Nordic Red Pine. Contrary to how it may sound the 'unsorted' grade is the best available on the open market. It is uniform and almost entirely knot free so is good for painting and provides the additional strength needed for a supporting leg.



The first grade American Oak that we use for the cabinet tops (where selected) and for coffee tables and all of the dining tables is sustainably sourced and always clean, uniform and largely knot free. Of course being a natural product these timbers have beautiful grain patterns which will vary between each piece. Timbers are hand selected for each piece we build.

AMERICAN OAK NOT ENGLISH?

That's right, and why not English Oak? well that's an easy one.....there isn't any! We used it all about 200 years ago I'm afraid building battleships, conquering the Caribbean and fighting the French. So whatever your political standing on our past exploits it didn't leave much commercial forest in the UK. Virtually all of the Oak woodland in the UK is ancient protected forest and whilst there is a tiny tiny amount of Oak timber created through natural forestry management this is reserved for special and heritage building projects. American White Oak is the major export timber for the United States and is used all over the world for making fine furniture. It is both managed and sustainable.



LETS PUT IT ALL TOGETHER



Using the traditional skills only found in a classic workshop environment the carefully prepared sections of your furniture are assembled ready for the the paint shop. It is at this stage that the benefits of hand production really start to stand out. Each join, each facing and every part of the furniture is inspected as it is being built, and any slight adjustments can be made here and now to ensure the finished article is perfect.



AND NOW FOR THE FUN PART... PATING



Truffle, Cloud, Stone or Ivory; whichever of the great colour choices you decided upon it all happens in the hands of our skilled paint shop operators. They may have the most fun job of the whole process but the paint shop is certainly the most serious place in the entire factory.

WHAT ABOUT THE PAINTS USED?

Our commitment to using only the best materials for the Island Breeze and Oxford collections continues in the paint shop. The paints are supplied by a very well respected British paint manufacturer who among other things also supply all the paint to Sunseeker Yachts. In our opinion if it's good enough for a multi million pound motor yacht, then it might just be good enough for us to paint your furniture with.



HOW TOUGH IS THE FINISH?

All the paints we use are Catalysed paints. Catalysed paint, unlike most other types of paint, contains a hardener that allows it to cure and dry more quickly. Once cured the paint takes on a very smooth finish and a hardness almost akin to a plastic coating. Most paints used by car manufacturers are catalysed paints so they are very tough. Other Advantages of Catalysed Paint The biggest advantage of catalysed paint over usual types of paint is that it does not allow solvents through the surface. Most paints, over time, allow microscopic holes to form after they've dried, which enables liquids, air and other elements in the environment to deteriorate the paint. Because catalysed paint dries more quickly, these holes take much longer to form, and the coat, therefore, lasts much longer than conventional paints.

We fit temporary transport feet to your furniture so that we can safely move it around in the factory and even these will get a coat of paint. If these feet are still in place when the furniture arrives with you, don't panic at their appearance, just twist them off and throw them away!



There is only one way to get the perfect finish on your painted furniture and that is slowly and carefully. Each piece is carefully prepared before entering the first stage of the paint shop . Here your furniture receives a base coat of primer, in either white or grey depending on the chosen final colour. Once this coat has dried the furniture is again inspected for any flaw which might show through to the top surface. Only when we are fully satisfied is the furniture passed through to the top coat sprayers. Spraying the top coat is a highly skilled job where experience counts above all else. Only two people in the whole factory have this skill level and it is nice to know that one or other of them will have personally painted your Furniture.

AND FINALLY

Carefully Wrapped And Ready To Ship



The painted furniture is moved from the paint shop to an infra red drying oven where it sits for a full 24 hours to ensure the paint is fully cured. Even when fully cured we like to leave the furniture to air for a good length of time which can be anything up to seven days. Before the furniture is finally wrapped ready to ship to your home each and every piece is given a good once over as a final quality check.

PAINTED FURNITURE

Your Colours, Your Style, Make It Your Own



Contact Us

Cirencester

17-19 Gosditch Street,
Cirencester
GL7 2AG
01285 656041
Email: cirencester@paintedfurnitureco.co.uk

Kingston-Upon-Thames

59-61 High Street,
Hampton Wick
KT1 4DG
020 8946 8336
Email: kingston@paintedfurnitureco.co.uk

PAINTED FURNITURE COMPANY
CIRENCESTER