

OXFORD LIVING & DINING

Your Colours, Your Style, Make It Your Own



Prices & Measurements

Pages 1 - 29

Oxford Build Guide

Pages 30 - 37



Made In The UK



Choice Of Colours



Bespoke Sizing

PAINTED FURNITURE COMPANY
CIRENCESTER

CONTENTS

OXFORD COLOURS	Page 1
OXFORD SMALL SIDEBOARDS	Page 2
OXFORD SMALL DRESSERS	Page 3
MEDIUM SIDEBOARDS	Page 4
MEDIUM DRESSERS	Page 5
LARGE SIDEBOARDS	Page 6
OXFORD CORNER TV UNITS	Page 9
OXFORD TV UNITS	Page 10-11
OXFORD CONSOL ETABLES	Page 12
COFFEE TABLE CHESTS WITH DRAWERS	Page 13
OXFORD SIMPLE COFFEE TABLES	Page 14
OXFORD COFFEE TABLES WITH A SHELF	Page 15-17
OXFORD SINGLE PEDESTAL DESKS	Page 18
OXFORD DOUBLE DESKS	Page 19
OXFORD FILING CABINETS	Page 20
DISPLAY UNITS, BOOKCASES & CUPBOARDS	Page 21-23
OXFORD EXTENDING TABLES	Page 25
OXFORD FIXED TABLES	Page 26
OXFORD DINING CHAIRS	Page 27
OXFORD EXTENDING OVAL TABLES	Page 28
OXFORD ROUND PEDESTAL TABLES	Page 29
OXFORD FURNITURE BUILD GUIDE	Page 30-37

OUR PAINT COLOURS

The Amberley collection colours are a broad palette of modern neutral tones designed to compliment your colour scheme.

We would always recommend that you do the same. Choosing Painted Furniture is about adding something to your home which is personal to you, something with soul!



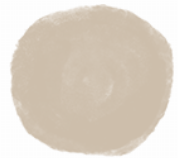
Lily White



Wessex White



Stone



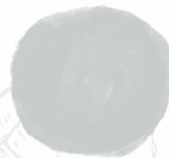
Truffle



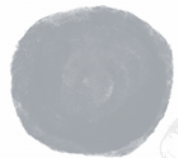
Cloud



Sea Mist



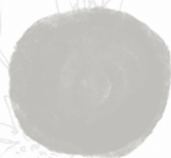
Little Boy Blue



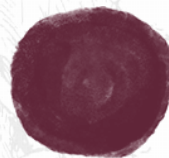
Moondust Grey



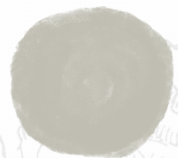
Coastal Mist



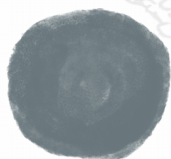
Cotton



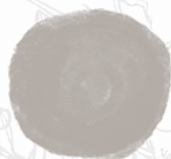
Corinium Red



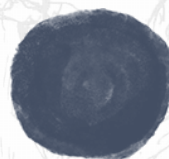
Rockford



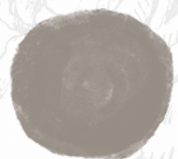
Denim



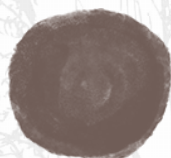
Dove



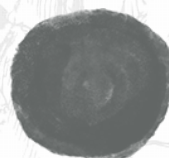
Inkwell



Potter's Clay



Leveret



Night Sky

PAINTED FURNITURE COMPANY

CIRENCESTER

Oxford Small Sideboards

W960 x H863 x D460 mm **£1,035**



IDSB22



IDSB21



IDSB20

Oxford Small Dressers

W960mm x H1900mm x D460mm



Open Dressers

Painted Shelves **£1,625** IDRA10

Glass Shelves **£1,775** IDRA11



2 Drawer Dressers

Painted Shelves **£1,690** IDRA13

Glass Shelves **£1,840** IDRA14

Glass Shelves & Doors **£1,854** IDRA15



With Glass Doors & Shelves

Half Height Doors **£1,840** IDRA12

Full Height Doors **£1,985** IDRA28

Optional Lighting Pack £99

Medium Sideboards

£1,160 W1400 x H863 x D460 mm



IDSB25



IDSB23



IDSB24

Medium Dressers

W1400mm x H1900mm x D460mm



Open Dressers

Painted Shelves **£1,880** IDRA16

Glass Shelves **£2,195** IDRA17

3 Drawer Dressers

Painted Shelves **£1,940** IDRA19

Glass Shelves **£2,260** IDRA20

Glass Shelves & Doors **£2,309** IDRA21



With Glass Doors & Shelves

Half Height Doors **£2,260** IDRA18

Full Height Doors **£2,405** IDRA29

Optional Lighting Pack £99

Large Sideboards

W1840 x H863 x D460 mm **£1,375**



IDSB28



IDSB26



IDSB27

Large Dressers

W1840mm x H1900mm x D460mm



Open Dressers



4 Drawer Dressers

Painted Shelves **£2,220** IDRA22

Glass Shelves **£2,560** IDRA23

Painted Shelves **£2,345** IDRA25

Glass Shelves **£2,705** IDRA26

Glass Shelves & Doors **£2,690** IDRA27



With Glass Doors & Shelves

Half Height Doors **£2,620** IDRA24

Full Height Doors **£2,770** IDRA30



Optional Lighting Pack £99

OXFORD TV UNITS AND COFFEE TABLES



Made In The UK



Choice Of Colours



Bespoke Sizing

PAINTED FURNITURE COMPANY
CIRENCESTER

Oxford Corner TV Units



Oxford Corner TV Unit - Open

W1080 x H580 x D460 mm **£675** IDTV51



Oxford Corner TV Unit with Drawer

W1080 x H580 x D460 mm **£780** IDTV52



Oxford Corner TV Unit with Glass Doors

W1080 x H580 x D460 mm **£825** IDTV53

Oxford TV Units



W1180mm x H650mm x D460mm **£910** IDTV73

W1180mm x H650mm x D580mm **£1,035** IDTV74



W1480mm x H650mm x D460mm **£995** IDTV75

W1480mm x H650mm x D580mm **£1,160** IDTV76



W1480mm x H650mm x D460mm **£1,035** IDTV84

W1780mm x H650mm x D460mm **£1,100** IDTV77

W1780mm x H650mm x D580mm **£1,290** IDTV78

Oxford TV Units



1 Drawer Open Shelf

£590

W610 x H460 x D460mm

IDTV79



2 Drawer Open Shelf

£780

W920 x H460 x D460mm

IDTV80



3 Drawer Open Shelf

£930

W1220 x H460 x D460mm

IDTV81

Oxford Console Tables



Drawer Straight Legs

W700mm H780mm D330mm

£655

IDHA90



1 Drawer Turned Legs

W700mm H780mm D330mm

£720

IDHA91



2 Drawer Straight Legs

W1220mm H780mm D330mm

£780

IDHA92



2 Drawer Turned Legs

W1220mm H780mm D330mm

£865

IDHA93

2 Drawer Straight Legs

W1220mm H780mm D330mm

£910

IDH94

2 Drawer Turned Legs

W1220mm H780mm D430mm

£995

IDHA95

Coffee Table Chests With Drawers

On Both Sides



2 Drawer Open Shelf
W580 x H460 x D580

£695
IDCO43



4 Drawer
W580 x H460 x D580

£760
IDCO40



4 Drawer Open Shelf
W915 X H460 x D580

£825
IDCO44



6 Drawer
W915 x H460 x D580

£910
IDCO41



6 Drawer Open Shelf
W1220 x H460 x D580

£950
IDCO45

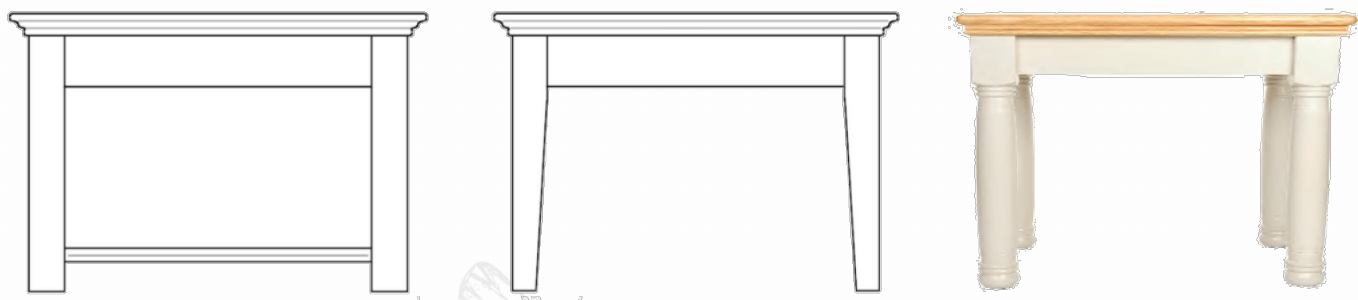


10 Drawer
W1220 x H460 x D580

£1,055
IDCO42

Oxford Simple Coffee Tables

With Straight, Tapered or Farmhouse Legs



Small Coffee Tables

W600mm H490mm D600mm

Straight Leg	£400	IDCO20
Tapered Leg	£400	IDCO22
Turned Leg	£445	IDCO21

Medium Coffee Tables

W920mm H490mm D600mm

Straight Leg	£530	IDCO25
Tapered Leg	£530	IDCO27
Turned Leg	£590	IDCO26

Large Coffee Tables

W1220mm H490mm D600mm

Straight Leg	£635	IDCO30
Tapered Leg	£635	IDCO32
Turned Leg	£675	IDCO31

Extra Large Coffee Tables

W1530mm H490mm D900mm

Straight Leg	£1,015	IDCO35
Tapered Leg	£1,015	IDCO37
Turned Leg	£1,055	IDCO36

Oxford Coffee Tables With A Shelf

With Straight or Farmhouse Legs



Small Coffee Tables

W600mm H490mm D600mm

Straight Leg

£445

IDCO23

Turned Leg

£505

IDCO24

Medium Coffee Tables

W920mm H490mm D600mm

Straight Leg

£610

IDCO28

Turned Leg

£675

IDCO29

Large Coffee Tables

W1220mm H490mm D600mm

Straight Leg

£695

IDCO33

Turned Leg

£741

IDCO34

Extra Large Coffee Tables

W1530mm H490mm D900mm

Straight Leg

£1,100

IDCO38

Turned Leg

£1,140

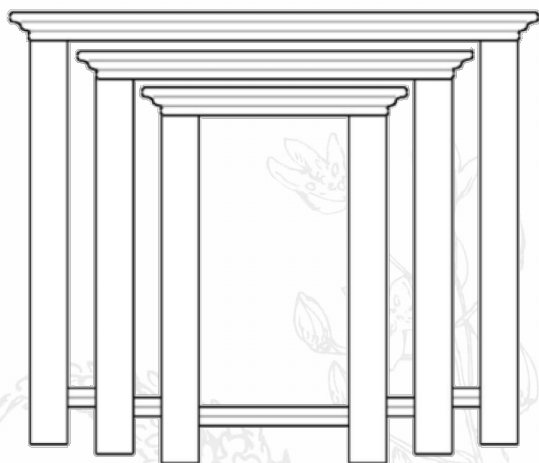
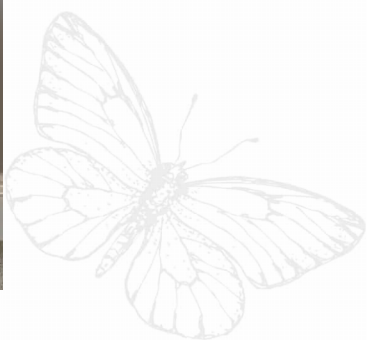
IDCO39



Oxford Lamp Tables

W550mm H610mm D400mm

With Straight Leg	£445	IDLA54
With Straight Leg and Shelf	£465	IDLA56
With Turned Leg	£485	IDLA55
With Turned Leg and Shelf	£505	IDLA57



Oxford Nest of Tables

Straight Leg **£550**

IDNE10



W550mm H610mm D400mm

Turned Leg **£590**

IDNE11

OXFORD OFFICE FURNITURE



Made In The UK



Choice Of Colours



Bespoke Sizing

PAINTED FURNITURE COMPANY
CIRENCESTER

Oxford Single Pedestal Desks

W1160mm x H820mm x D550mm



1 Door, 1 Drawer with Turned Leg

£970 IDDE41



1 Door, 1 Drawer with Straight Leg

£930 IDDE40



3 Drawer with Turned Leg

£970 IDDE43



3 Drawer with Straight Leg

£930 IDDE42

Oxford Double Desks

W1420mm x H820mm x D550mm



Oxford Desk with 2 Filing Drawers

£1,310 IDDE54



Oxford Desk with 2 Drawers & 2 Cupboards

£1,310 IDDE53



Oxford Desk with Cupboard

£1,310 IDDE52



Oxford Desk with Filing Drawer

£1,310 IDDE51



Oxford 6 Drawer Desk

£1,310 IDDE50

Oxford Filing Cabinets



2 Filing Drawers

£695

W572 x H853 x D578 IDFC20



4 Filing Drawers (Wide)

£1,015

W1068 x H853 x D578 IDFC23



2 Filing Drawers & 1 Door

£805

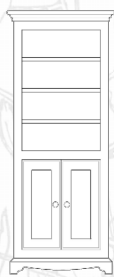
W1068 x H853 x D578 IDFC21

OXFORD DISPLAY UNITS

BOOKCASES & CUPBOARDS



OPEN
BOOKCASE



STORAGE
BOOKCASE



CUPBOARD



DISPLAY
UNIT



Made In The UK

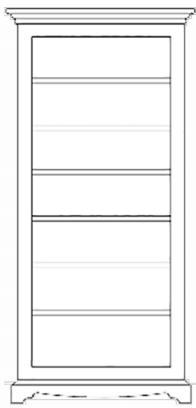


Choice Of Colours



Bespoke Sizing

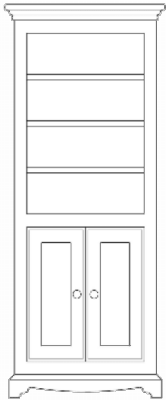
PAINTED FURNITURE COMPANY
CIRENCESTER



Open Bookcases

Number Of Shelves:

- Extra Low - Adjustable 1 x Painted, Fixed 0
- Low - Adjustable 2 x Painted, Fixed 0
- Medium - Adjustable 3 x Painted, Fixed 0
- Tall - Adjustable 3 x Painted, Fixed 1 x Painted
- Extra Tall - Adjustable 4 x Painted, Fixed 1 x Painted



Storage Bookcases

Number Of Shelves:

- Tall - Adjustable 3 x Painted, Fixed 1 x Painted
- Extra Tall - Adjustable 4 x Painted, Fixed 1 x Painted

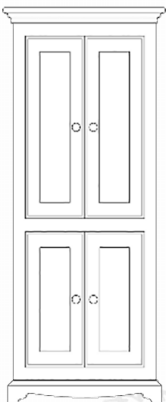
Doors:

Narrow Storage Bookcases

Single Painted Door

Wide Storage Bookcases

Double Painted Doors



Cupboards

Number Of Shelves:

- Extra Low - Adjustable 1 x Painted, Fixed 0
- Low - Adjustable 2 x Painted, Fixed 0
- Medium - Adjustable 3 x Painted, Fixed 0
- Tall - Adjustable 3 x Painted, Fixed 1 x Painted
- Extra Tall - Adjustable 4 x Painted, Fixed 1 x Painted

Doors:

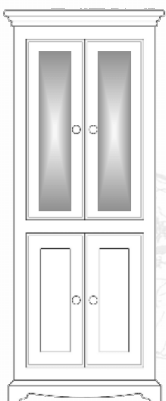
Narrow Cupboards

Single Painted Door

Wide Cupboards

Double Painted Doors

Tall & Extra Tall Cupboards will have painted doors on Both the base and the top



Display Units With Lighting Pack

Number Of Shelves:

- | | |
|--|-------------------|
| • Extra Low - Adjustable 1 x Painted, Fixed 0 | Fixed 0 |
| • Low - Adjustable 2 x Painted, Fixed 0 | Fixed 0 |
| • Medium - Adjustable 3 x Painted, Fixed 0 | Fixed 0 |
| • Tall - Adjustable 3 x Painted, Fixed 1 x Painted | Fixed 1 x Painted |
| • Extra Tall - Adjustable 4 x Painted, Fixed 1 x Painted | Fixed 1 x Painted |

Doors:

Narrow Display Units

Single Glazed Door

Wide Display Units

Double Glazed Doors

Tall & Extra Tall Display Units will have painted doors on the base and glazed doors on the top.

Height	Width	Depth	Open Bookcase	Storage Bookcase	Cupboard	Display Units
Extra Low 760mm	640mm	300mm 370mm	£570 - BC310 £610 - BC320		£740 - BC31P £780 - BC32P	£695 - IDG31 £740 - IDG32
	950mm	300mm 370mm	£635 - BC340 £675 - BC350		£780 - BC34P £865 - BC35P	£805 - IDG34 £865 - IDG35
Low 1070mm	640mm	300mm 370mm	£610 - BC370 £655 - BC380		£780 - BC37P £825 - BC38P	£805 - IDG37 £845 - IDG38
	950mm	300mm 370mm	£675 - BC400 £720 - BC410		£825 - BC40P £885 - BC41P	£970 - IDG40 £1,035 - IDG41
Medium 1370mm	640mm	300mm 370mm	£635 - BC430 £720 - BC440		£805 - BC43P £865 - BC44P	£865 - IDG43 £950 - IDG44
	950mm	300mm 370mm	£740 - BC460 £780 - BC470		£1,015 - BC46P £1,100 - BC47P	£1,055 - IDG46 £1,160 - IDG47
Tall 1680mm	640mm	300mm 370mm	£720 - BC490 £740 - BC500	£825 - BC49H £885 - BC50H	£885 - BC49P £950 - BC50P	£995 - IDG49 £1,075 - IDG50
	950mm	300mm 370mm	£825 - BC520 £885 - BC530	£995 - BC52H £1,055 - BC53H	£1,120 - BC52P £1,185 - BC53P	£1,245 - IDG52 £1,330 - IDG53
Extra Tall 1980mm	640mm	300mm 370mm	£740 - BC550 £825 - BC560	£825 - BC55H £950 - BC56H	£885 - BC55P £995 - BC56P	£1,055 - IDG55 £1,185 - IDG56
	950mm	300mm 370mm	£865 - BC580 £950 - BC590	£1,015 - BC58H £1,120 - BC59H	£1,140 - BC58P £1,245 - BC59P	£1,330 - IDG58 £1,480 - IDG59



Made In The UK



Choice Of Colours



Bespoke Sizing

PAINTED FURNITURE COMPANY

CIRENCESTER

OXFORD DINING TABLES



Made In The UK



Choice Of Colours



Bespoke Sizing

PAINTED FURNITURE COMPANY
CIRENCESTER

Oxford Extending Tables

With Turned Or Tapered Legs



Tapered Leg

1220mm to 1530mm x W920mm **£1,225** IDTA60

1530mm to 2080mm x W920mm **£1,520** IDTA64

1830mm to 2390mm x W920mm **£1,730** IDTA68

Turned Leg

1220mm to 1530mm x W920mm **£1,310** IDTA61

1530mm to 2080mm x W920mm **£1,585** IDTA65

1830mm to 2390mm x W920mm **£1,730** IDTA69

Oxford Fixed Tables

With Turned Or Tapered Legs



Tapered Leg

1220mm x W920mm	£1,035	IDTA62
1530mm x W920mm	£1,225	IDTA66
1830mm x W920mm	£1,435	IDTA70

Turned Leg

1220mm x W920mm	£1,120	IDTA63
1530mm x W920mm	£1,310	IDTA67
1830mm x W920mm	£1,435	IDTA71

Oxford Dining Chairs

Our Dining Chairs come in a large choice of upholstered seat pads in Clark & Clark Fabrics or with an Oak seat



Farmhouse Chair
£295 CH62/63



Multi Slat Chair
£295 CH64/65



Twin Slat Chair
£295 CH66/67

Oxford Benches To Fit Between The Legs Of The Oxford Tables



Straight Leg

<i>Fits The 1220mm Table</i>	£400	<i>W940mm H490mm D380mm</i>	IDBE80
<i>Fits The 1530mm Table</i>	£485	<i>W1250mm H490mm D380mm</i>	IDBE82
<i>Fits The 1830mm Table</i>	£570	<i>W1550mm H490mm D380mm</i>	IDBE84

Turned Leg

<i>Fits The 1220mm Table</i>	£445	<i>W940mm H490mm D380mm</i>	IDBE81
<i>Fits The 1530mm Table</i>	£550	<i>W1250mm H490mm D380mm</i>	IDBE83
<i>Fits The 1830mm Table</i>	£610	<i>W1550mm H490mm D380mm</i>	IDBE85

Oxford Round Pedestal Tables



1220mm Diameter

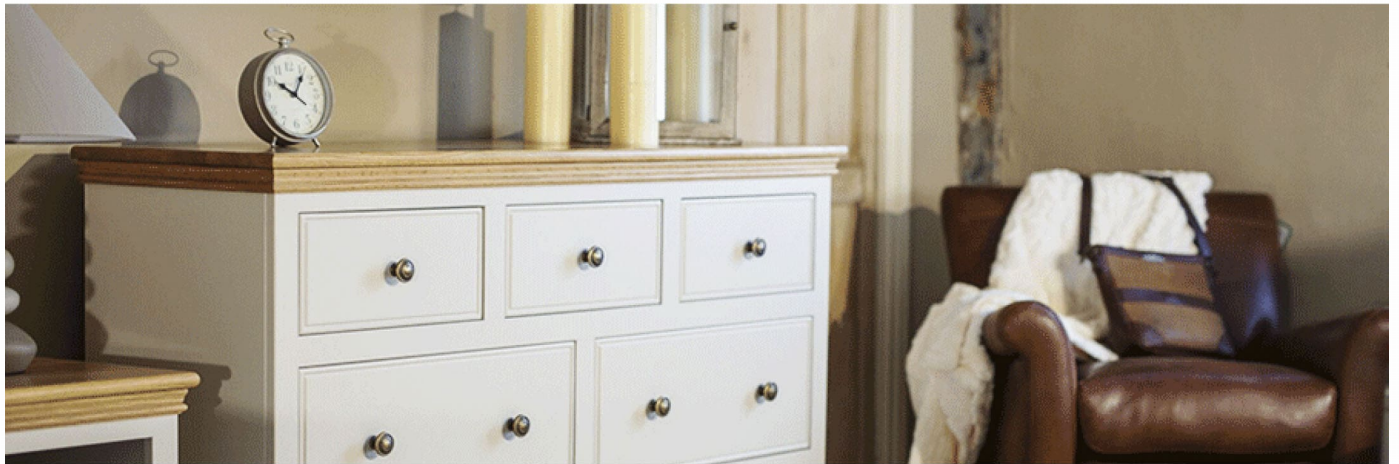
£1,115 IDTA72

1530mm Diameter

£1,320 IDTA73

FURNITURE BUILD GUIDE

A Focus On The Oxford Collection



\\WITH A GOOD DESIGN



Our beautiful Oxford collection is made at a small independent factory in the South West of England, just a few miles from Bath. We don't mass produce this furniture or hold stock piles of finished product, quite the opposite in fact, each piece is made individually to your order, in your chosen colour, in your specified finish and even in your own bespoke size if required.

MEASURE TWICE, CUT ONCE.



Although the factory invests continually in modern machinery there is plenty of traditional skill on show. Pencils, Rulers and tape measures are never far away. Arguably one of the most important and time consuming parts of the build process is the initial cutting of the materials needed to build your cabinets. We take a lot of time and care in this part of the process because it needs to be right first time, a misplaced cut at this stage can spell disaster later on! A Careful eye is applied at each stage as the sections of your cabinet are cut, detailed and made ready for assembly.



EVERYBODY LOVES A DOVETAIL JOINT

Details And Construction



With the strength and quality of modern epoxy glues it isn't strictly necessary to use traditional Tongue and groove, mortise and tenon or dovetail jointing, but when hand building a piece of quality furniture it somehow just feels right to use these tried and tested traditional techniques. So we do!

Its just a shame we always paint over them!

Drawer boxes are always an important part of any piece of furniture, so we like to make sure ours are built properly. All the drawer boxes in the Oxford furniture collection are built with 20mm thick front side and back sections, the front is dovetail jointed for a correct boxed finish and the rear is glued and doweled. The bottom of the drawers are made using a full 10mm thick board, so no saggy bottoms with these drawers. They are all assembled by hand and tested for strength.



THE BEST FINISH REQUIRES THE BEST MATERIALS



Making sure the final finish of your piece of furniture has the perfect smooth look that we are renowned for starts way before the paint shop. The engineered timber we use to build the carcass of the Oxford Furniture is the best available.

Whilst we use grade one American Oak for the beautiful Oak tops of your furniture, and trust us, they really are lovely, the main carcass of the Oxford Furniture is built using a high density engineered timber. This engineered timber is made using a combination of hardwood and epoxy resin which is formed under intense pressure to create a very dense, stable material which is the perfect base for building painted furniture. Why do we use an Engineered Timber rather than a solid wood construction? Simple really, the Oxford collection is our premium collection and its the best material for the job.



Our engineered timbers have superior stability when compared to hardwood sections and are resistant to expansion or contraction with changing levels in temperature or humidity. Wood inevitably moves slightly as the temperature or humidity in your home changes, usually from season to season. That's ok for a non painted product but if that happened with our painted furniture the paint would obviously crack and ruin the appearance of your furniture. The only drawback is that with a density of of around 900kg/m3 the engineered timbers mean that our furniture is very heavy, but that's not such a bad thing. We also select engineered timbers which are designed for optimal uniformity which, along with the fact they they are entirely free of knots, helps us to create the perfectly smooth finish you expect.

OTHER SELECT MATERIALS

All of the legs on the Oxford furniture, whether turned or straight on dining tables, coffee tables and dressing tables are built using 'unsorted grade' Nordic Red Pine. Contrary to how it may sound the 'unsorted' grade is the best available on the open market. It is uniform and almost entirely knot free so is good for painting and provides the additional strength needed for a supporting leg.



The first grade American Oak that we use for the cabinet tops (where selected) and for coffee tables and all of the dining tables is sustainably sourced and always clean, uniform and largely knot free. Of course being a natural product these timbers have beautiful grain patterns which will vary between each piece. Timbers are hand selected for each piece we build.

AMERICAN OAK NOT ENGLISH?

That's right, and why not English Oak? well that's an easy one.....there isn't any! We used it all about 200 years ago I'm afraid building battleships, conquering the Caribbean and fighting the French. So whatever your political standing on our past exploits it didn't leave much commercial forest in the UK. Virtually all of the Oak woodland in the UK is ancient protected forest and whilst there is a tiny tiny amount of Oak timber created through natural forestry management this is reserved for special and heritage building projects. American White Oak is the major export timber for the United States and is used all over the world for making fine furniture. It is both managed and sustainable.



LETS PUT IT ALL TOGETHER



Using the traditional skills only found in a classic workshop environment the carefully prepared sections of your furniture are assembled ready for the the paint shop. It is at this stage that the benefits of hand production really start to stand out. Each join, each facing and every part of the furniture is inspected as it is being built, and any slight adjustments can be made here and now to ensure the finished article is perfect.



AND NOW FOR THE FUN PART... PATING



Truffle, Cloud, Stone or Ivory; whichever of the great colour choices you decided upon it all happens in the hands of our skilled paint shop operators. They may have the most fun job of the whole process but the paint shop is certainly the most serious place in the entire factory.

WHAT ABOUT THE PAINTS USED?

Our commitment to using only the best materials for the Oxford collection continues in the paint shop. The paints are supplied by a very well respected British paint manufacturer who among other things also supply all the paint to Sunseeker Yachts. In our opinion if it's good enough for a multi million pound motor yacht, then it might just be good enough for us to paint your furniture with.



HOW TOUGH IS THE FINISH?

All the paints we use are Catalysed paints. Catalysed paint, unlike most other types of paint, contains a hardener that allows it to cure and dry more quickly. Once cured the paint takes on a very smooth finish and a hardness almost akin to a plastic coating. Most paints used by car manufacturers are catalysed paints so they are very tough. Other Advantages of Catalysed Paint The biggest advantage of catalysed paint over usual types of paint is that it does not allow solvents through the surface. Most paints, over time, allow microscopic holes to form after they've dried, which enables liquids, air and other elements in the environment to deteriorate the paint. Because catalysed paint dries more quickly, these holes take much longer to form, and the coat, therefore, lasts much longer than conventional paints.

We fit temporary transport feet to your furniture so that we can safely move it around in the factory and even these will get a coat of paint. If these feet are still in place when the furniture arrives with you, don't panic at their appearance, just twist them off and throw them away!



There is only one way to get the perfect finish on your painted furniture and that is slowly and carefully. Each piece is carefully prepared before entering the first stage of the paint shop . Here your furniture receives a base coat of primer, in either white or grey depending on the chosen final colour. Once this coat has dried the furniture is again inspected for any flaw which might show through to the top surface. Only when we are fully satisfied is the furniture passed through to the top coat sprayers. Spraying the top coat is a highly skilled job where experience counts above all else. Only two people in the whole factory have this skill level and it is nice to know that one or other of them will have personally painted your Furniture.

AND FINALLY

Carefully Wrapped And Ready To Ship



The painted furniture is moved from the paint shop to an infra red drying oven where it sits for a full 24 hours to ensure the paint is fully cured. Even when fully cured we like to leave the furniture to air for a good length of time which can be anything up to seven days. Before the furniture is finally wrapped ready to ship to your home each and every piece is given a good once over as a final quality check.

PAINTED FURNITURE

Your Colours, Your Style, Make It Your Own



Contact Us

Cirencester

17-19 Gosditch Street,
Cirencester
GL7 2AG
01285 656041
Email: cirencester@paintedfurnitureco.co.uk

Kingston-Upon-Thames

59-61 High Street,
Hampton Wick
KT1 4DG
020 8946 8336
Email: kingston@paintedfurnitureco.co.uk

PAINTED FURNITURE COMPANY
CIRENCESTER

