

PORTLAND BEDROOM

Your Colours, Your Style, Make It Your Own



Prices & Measurements

Pages 1 - 13

Portland Build Guide

Pages 14 - 21



Made In The UK



Choice Of Colours



Bespoke Sizing

PAINTED FURNITURE COMPANY

CIRENCESTER

OUR PAINT COLOURS

The Amberley collection colours are a broad palette of modern neutral tones designed to compliment your colour scheme.

We would always recommend that you do the same. Choosing Painted Furniture is about adding something to your home which is personal to you, something with soul!



Lily White



Wessex White



Stone



Truffle



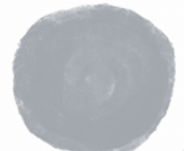
Cloud



Sea Mist



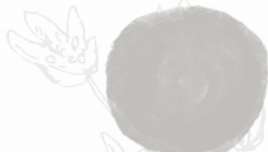
Little Boy Blue



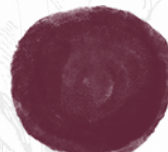
Moondust Grey



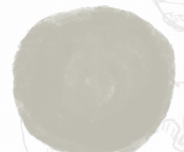
Coastal Mist



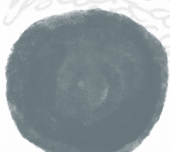
Cotton



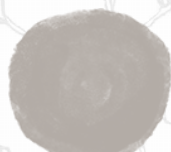
Corinium Red



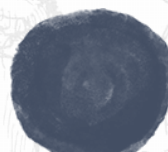
Rockford



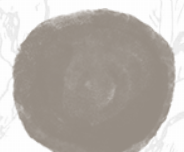
Denim



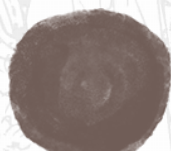
Dove



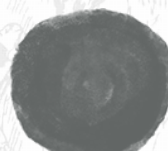
Inkwell



Potter's Clay



Leveret



Night Sky

PAINTED FURNITURE COMPANY

CIRENCESTER

Portland Bed Frame With High Foot End

Shown in picture with optional under bed drawers £635



3ft Single	£970	W1030 x H1170 x D2080 mm	MB101A
4ft Small	£1,075	W1350 x H1170 x D2080 mm	MB104A
4ft 6 Double	£1,120	W1500 x H1170 x D2080 mm	MB107A
5ft Double King	£1,185	W1650 x H1170 x D2180 mm	MB110A
6ft Super King	£1,245	W1970 x H1170 x D2180 mm	MB113A



Low Foot End Bed

Shown in picture with optional under bed drawers



3ft Single	£825	<i>W1030 x H1170 x D2050 mm</i>	MB100A
4ft Small Double	£910	<i>W1350 x H1170 x D2050 mm</i>	MB103A
4ft 6 Double	£970	<i>W1500 x H1170 x D2050 mm</i>	MB106A
5ft King	£1,055	<i>W1650 x H1170 x D2150 mm</i>	MB109A
6ft Super King	£1,120	<i>W1960 x H1170 x D2150 mm</i>	MB112A

Portland Headboard Only

3ft Single	£385	<i>W1030 x H1170 x D120 mm</i>	MB102A
4ft Small Double	£430	<i>W1350 x H1170 x D120 mm</i>	MB105A
4ft 6 Double	£475	<i>W1500 x H1170 x D120 mm</i>	MB108A
5ft King	£505	<i>W1650 x H1170 x D120 mm</i>	MB111A
6ft Super King	£550	<i>W1960 x H1170 x D120 mm</i>	MB114A

Portland Bedsides



1 Drawer Open Shelf Bedsides

Small	£285	W380 x H598 x D360 mm	MB212A
Medium	£335	W480 x H598 x D360 mm	MB203a
Large	£375	W560 x H598 x D460 mm	MB210a



2 Drawer Bedsides

Small	£320	W380 x H598 x D360 mm	MB206a
Medium	£365	W480 x H598 x D360 mm	MB204a
Large	£395	W560 x H598 x D460 mm	MB209a



1 Door Bedside

Medium	£340	W480 x H598 x D360 mm	MB200a
--------	-------------	-----------------------	--------



Portland Tall Bedside



1 Door Open Shelf Bedside

Medium **£360** W480 x H758 x D360 mm MB201a



2 Drawer Open Shelf Bedside

Small **£340** W380 x H758 x D360 mm MB207a

Medium **£380** W480 x H758 x D360 mm MB205a

Large **£415** W560 x H758 x D460 mm MB211a



1 Door 1 Drawer Bedside

Medium **£380** W480 x H758 x D360 mm MB202a



3 Drawer Bedside

Small **£365** W380 x H758 x D360 mm MB214a

Medium **£390** W480 x H758 x D360 mm MB208a

Large **£450** W560 x H758 x D460 mm MB213a

Portland Chest Of Drawers



2 Over 2 Chest

Small **£780**

W790 x H880 x D460 mm MB301a

Large **£825**

W1040 x H930 x D460 mm MB300a



3 Drawer Chest

Small **£780**

W790 x H880 x D460 mm MB314a

Large **£825**

W1040 x H930 x D460 mm MB304a



2 Over 3

Small **£805**

W810 x H1160 x D460 mm MB303a

Large **£865**

W1040 x H1210 x D460 mm MB302a



3 Over 4

Small **£1,075**

W1160 x H880 x D460 mm MB306a

Large **£1,120**

W1480 x H930 x D460 mm MB305a

Portland Chest Of Drawers



Tallboys

4 Drawer Wide £825 W680 x H1060 x D460 mm MB308a

4 Drawer

Narrow £505 W480 x H1060 x D360 mm MB313a

5 Drawer Wide £885 W680 x H1270 x D460 mm MB309a

5 Drawer

Narrow £570 W480 x H1270 x D360 mm MB307a



Gents Chest

£1,120

W1040 x H1270 x D460 mm MB311

Please note that the Gents Chest does not come apart for delivery. Should you need it to be assembled in the room of your choice, please select the 'knock down' version.

This will be built in 2 parts, the drawer section and the hanging section, which then sit in a shared hat and plinth. This version costs £1,330



Blanket Box With Lift Up Lid



Small **£530**

W940 x H420 x D510 mm MB602a



Large **£590**

W1240 x H420 x D510 mm MB603a

Blanket Chest with Drawers



Small **£550**

W940 x H420 x D460 mm MB600a



Large **£610**

W1240 x H420 x D460 mm MB601a

Dressing Tables



Small **£780**

W980 x H760 x D460 mm MB500a



Double **£1,015**

W1280 x H760 x D460 mm MB501a



- Stool **£255** W370 x H480 x D370 mm MB502a
- Swing Mirror Small **£170** W400 x H450 x D200 mm MB700a
- Swing Mirror Large **£210** W700 x H450 x D200 mm MB701a

PORTLAND WARDROBES



Extra Hanging Rail **£65** WHR30

Fitted Or Adjustable Shelves **£65** WSH40

Centre Divide **£115** WCD50

Tie Rack **£65** WTR60

Join Two Wardrobes In a Shared Plinth & Top **£100** WSHP70



Made In The UK



Choice Of Colours



Bespoke Sizing

Portland One Door Narrow Wardrobes

Width 480mm x Depth 580mm



Full Hanging

1830mm High **£610** MB405a

2130mm High **£695** MB407a



With 1 Drawer

1830mm High **£675** MB409a

2130mm High **£760** MB411a

Portland One Door Wide Wardrobes

Width 720mm x Depth 580mm



Full Hanging

1830mm High **£675** MB406a

2130mm High **£760** MB408a



With 1 Drawer

1830mm High **£740** MB410a

2130mm High **£845** MB412a

Portland Two Door Narrow Wardrobes

Width 940mm x Depth 580mm



Full Hanging

1380mm High **£845** MB401a

1830mm High **£910** MB400a

2130mm High **£1,055** MB402a



With 2 Drawer

1830mm High **£1,075** MB403a

2130mm High **£1,245** MB404a

Portland Two Door Wide Wardrobes

Width 1240mm x Depth 580mm



Full Hanging

1380mm High **£970** MB414a

1830mm High **£1,015** MB413a

2130mm High **£1,140** MB415a



With 2 Drawer

1830mm High **£1,140** MB416a

2130mm High **£1,280** MB417a

Portland Three Door Narrow Wardrobes

Width 1470mm x Depth 580mm



Full Hanging

1380mm High **£1,520** MB420a

1830mm High **£1,605** MB419a

2130mm High **£1,815** MB421a



With 2 Drawer

1830mm High **£1,900** MB422a

2130mm High **£2,155** MB423a

Portland Three Door Wide Wardrobes

Width 1920mm x Depth 580mm



Full Hanging

1380mm High **£1,645** MB425a

1830mm High **£1,730** MB424a

2130mm High **£1,965** MB426a



With 3 Drawer

1830mm High **£1,965** MB427a

2130mm High **£2,240** MB428a

Portland 4 Door Narrow Wardrobes

Width 1840mm x Depth 580mm



Full Hanging

1380mm High **£1,775** MB437a

1830mm High **£1,860** MB429a

2130mm High **£2,135** MB430a



With 2 Drawers

1830mm High **£2,240** MB431a

2130mm High **£2,535** MB432a

Portland Four Door Wide Wardrobes

Width 2440mm x Depth 580mm



Full Hanging

1830mm High **£2,090** MB433a

2130mm High **£2,410** MB434a



With Drawers

1830mm High **£2,365** MB435a

2130mm High **£2,705** MB436a

FURNITURE BUILD GUIDE

A Focus On The Portland Collection



IT ALL STARTS WITH A GOOD DESIGN



Our Beautiful Portland collections are both made at a small independent factory in the South West of England, just a few miles from Bath. We don't mass produce this furniture or hold stock piles of finished product, quite the opposite in fact, each piece is made individually to your order, in your chosen colour, in your specified finish and even in your own bespoke size if required.

MEASURE TWICE, CUT ONCE.



Although the factory invests continually in modern machinery there is plenty of traditional skill on show. Pencils, Rulers and tape measures are never far away. Arguably one of the most important and time consuming parts of the build process is the initial cutting of the materials needed to build your cabinets. We take a lot of time and care in this part of the process because it needs to be right first time, a misplaced cut at this stage can spell disaster later on! A Careful eye is applied at each stage as the sections of your cabinet are cut, detailed and made ready for assembly.



EVERYBODY LOVES A DOVETAIL JOINT

Details And Construction



With the strength and quality of modern epoxy glues it isn't strictly necessary to use traditional Tongue and groove, mortise and tenon or dovetail jointing, but when hand building a piece of quality furniture it somehow just feels right to use these tried and tested traditional techniques. So we do!

Its just a shame we always paint over them!

Drawer boxes are always an important part of any piece of furniture, so we like to make sure ours are built properly. All the drawer boxes in the Oxford furniture collection are built with 20mm thick front side and back sections, the front is dovetail jointed for a correct boxed finish and the rear is glued and doweled. The bottom of the drawers are made using a full 10mm thick board, so no saggy bottoms with these drawers. They are all assembled by hand and tested for strength.



THE BEST FINISH REQUIRES THE BEST MATERIALS



Making sure the final finish of your piece of furniture has the perfect smooth look that we are renowned for starts way before the paint shop. The engineered timber we use to build the carcass of the Portland Furniture is the best available.

Whilst we use grade one American Oak for the beautiful Oak tops of your furniture, and trust us, they really are lovely, the main carcass of the Portland Furniture is built using a high density engineered timber. This engineered timber is made using a combination of hardwood and epoxy resin which is formed under intense pressure to create a very dense, stable material which is the perfect base for building painted furniture. Why do we use an Engineered Timber rather than a solid wood construction? Simple really, the Portland collection is our premium collection and its the best material for the job.



Our engineered timbers have superior stability when compared to hardwood sections and are resistant to expansion or contraction with changing levels in temperature or humidity. Wood inevitably moves slightly as the temperature or humidity in your home changes, usually from season to season. That's ok for a non painted product but if that happened with our painted furniture the paint would obviously crack and ruin the appearance of your furniture. The only drawback is that with a density of of around 900kg/m³ the engineered timbers mean that our furniture is very heavy, but that's not such a bad thing. We also select engineered timbers which are designed for optimal uniformity which, along with the fact they they are entirely free of knots, helps us to create the perfectly smooth finish you expect.

OTHER SELECT MATERIALS

All of the legs on the Portland furniture, whether turned or straight on dining tables, coffee tables and dressing tables are built using 'unsorted grade' Nordic Red Pine. Contrary to how it may sound the 'unsorted' grade is the best available on the open market. It is uniform and almost entirely knot free so is good for painting and provides the additional strength needed for a supporting leg.



The first grade American Oak that we use for the cabinet tops (where selected) and for coffee tables and all of the dining tables is sustainably sourced and always clean, uniform and largely knot free. Of course being a natural product these timbers have beautiful grain patterns which will vary between each piece. Timbers are hand selected for each piece we build.

AMERICAN OAK NOT ENGLISH?

That's right, and why not English Oak? well that's an easy one.....there isn't any! We used it all about 200 years ago I'm afraid building battleships, conquering the Caribbean and fighting the French. So whatever your political standing on our past exploits it didn't leave much commercial forest in the UK. Virtually all of the Oak woodland in the UK is ancient protected forest and whilst there is a tiny tiny amount of Oak timber created through natural forestry management this is reserved for special and heritage building projects. American White Oak is the major export timber for the United States and is used all over the world for making fine furniture. It is both managed and sustainable.





Using the traditional skills only found in a classic workshop environment the carefully prepared sections of your furniture are assembled ready for the the paint shop. It is at this stage that the benefits of hand production really start to stand out. Each joint, each facing and every part of the furniture is inspected as it is being built, and any slight adjustments can be made here and now to ensure the finished article is perfect.



AND NOW FOR THE FUN PART... PATING



Truffle, Cloud, Stone or Ivory; whichever of the great colour choices you decided upon it all happens in the hands of our skilled paint shop operators. They may have the most fun job of the whole process but the paint shop is certainly the most serious place in the entire factory.

WHAT ABOUT THE PAINTS USED?

Our commitment to using only the best materials for the Island Breeze and Oxford collections continues in the paint shop. The paints are supplied by a very well respected British paint manufacturer who among other things also supply all the paint to Sunseeker Yachts. In our opinion if its good enough for a multi million pound motor yacht, then it might just be good enough for us to paint your furniture with.



HOW TOUGH IS THE FINISH?

All the paints we use are Catalysed paints. Catalysed paint, unlike most other types of paint, contains a hardener that allows it to cure and dry more quickly. Once cured the paint takes on a very smooth finish and a hardness almost akin to a plastic coating. Most paints used by car manufacturers are catalysed paints so they are very tough. Other Advantages of Catalysed Paint The biggest advantage of catalysed paint over usual types of paint is that it does not allow solvents through the surface. Most paints, over time, allow microscopic holes to form after they've dried, which enables liquids, air and other elements in the environment to deteriorate the paint. Because catalysed paint dries more quickly, these holes take much longer to form, and the coat, therefore, lasts much longer than conventional paints.

We fit temporary transport feet to your furniture so that we can safely move it around in the factory and even these will get a coat of paint. If these feet are still in place when the furniture arrives with you, don't panic at their appearance, just twist them off and throw them away!



There is only one way to get the perfect finish on your painted furniture and that is slowly and carefully. Each piece is carefully prepared before entering the first stage of the paint shop . Here your furniture receives a base coat of primer, in either white or grey depending on the chosen final colour. Once this coat has dried the furniture is again inspected for any flaw which might show through to the top surface. Only when we are fully satisfied is the furniture passed through to the top coat sprayers. Spraying the top coat is a highly skilled job where experience counts above all else. Only two people in the whole factory have this skill level and it is nice to know that one or other of them will have personally painted your Furniture.

AND FINALLY

Carefully Wrapped And Ready To Ship



The painted furniture is moved from the paint shop to an infra red drying oven where it sits for a full 24 hours to ensure the paint is fully cured. Even when fully cured we like to leave the furniture to air for a good length of time which can be anything up to seven days. Before the furniture is finally wrapped ready to ship to your home each and every piece is given a good once over as a final quality check.

PAINTED FURNITURE

Your Colours, Your Style, Make It Your Own



Contact Us

Cirencester

17-19 Gosditch Street,
Cirencester
GL7 2AG
01285 656041
Email: cirencester@paintedfurnitureco.co.uk

Kingston-Upon-Thames

59-61 High Street,
Hampton Wick
KT1 4DG
020 8946 8336
Email: kingston@paintedfurnitureco.co.uk



PAINTED FURNITURE COMPANY
CIRENCESTER